

Duncan Lake Early Childhood Center

Young 5's Arrival & Dismissal



Parent Drop off/ Pick Up Location



Bus Drop Off

AM DROP OFF

Please wait in your car until the students are coming off the bus at 8:45am. Please do not leave your child unattended at the door. Parents should park in the lot on the north side of the building by the playground.

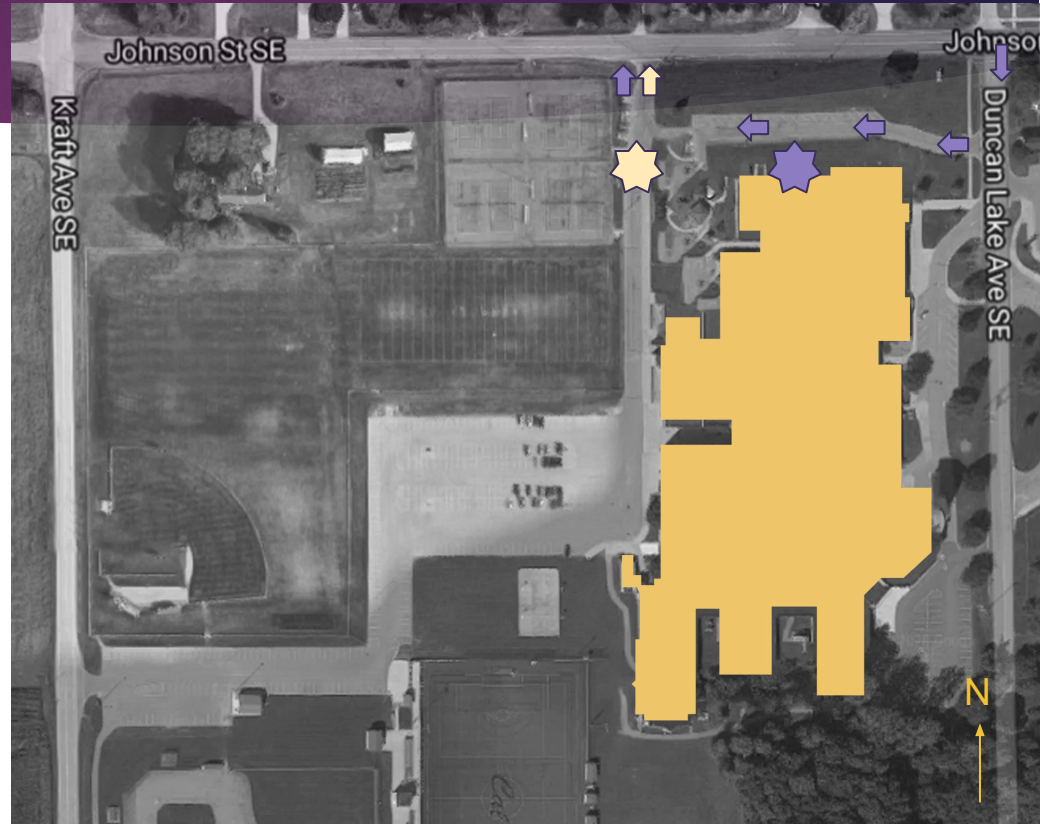
PM PICK UP

If you pick up your child, you may begin lining up 10 minutes prior to dismissal.

All families will be assigned a number and must display the provided number card in their vehicles. Students will be supervised in the building until their number is called. Children will be helped to their cars, and parents should pull forward as soon as their child is in the car.

COORDINATING ARRIVALS

If you have older children in an elementary building, we recommend the following: AM drop off should be done at the elementary building prior to the ECC. PM pick up should be done at the ECC before the elementary buildings.



Duncan Lake Early Childhood Center

Preschool Arrival and Dismissal



Parent Drop off/Pick up Location



5 Minute Parking

DROP OFF

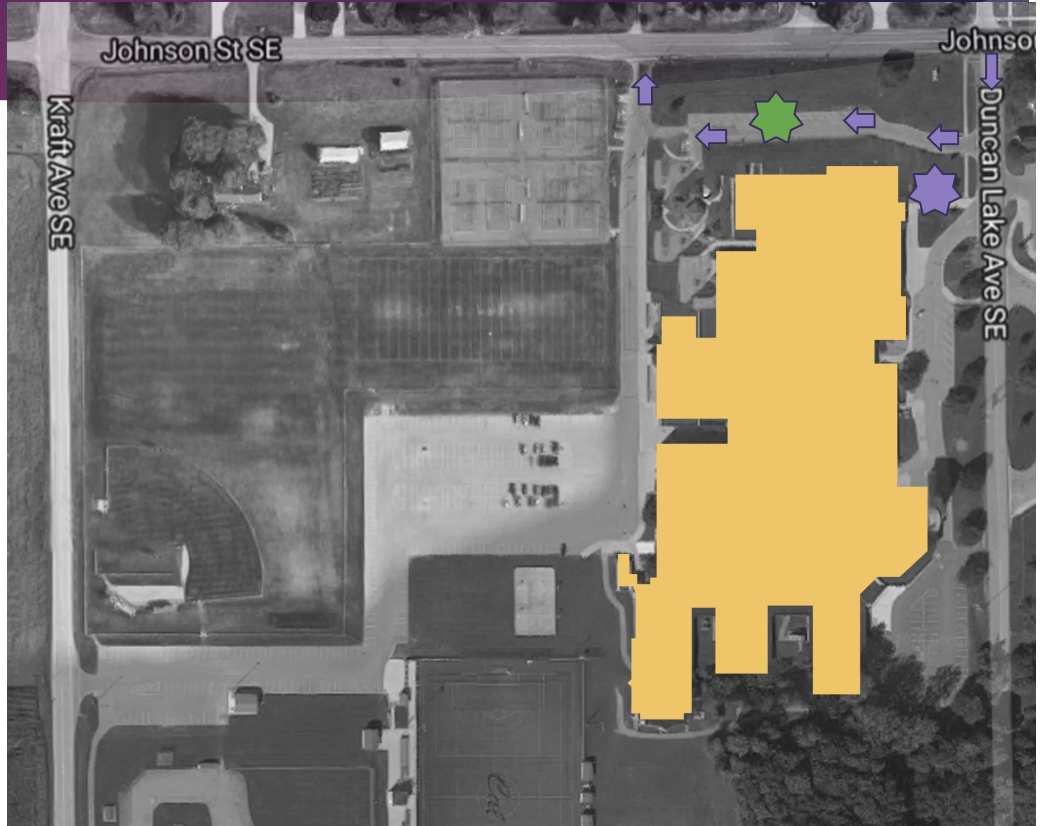
Parents will park in the green star lot & walk students to the front doors. **Please limit parking to 5 minutes.** There are four doors, one for each preschool teacher. When you arrive, scan the Brightwheel code to sign in for the day and wait with your student in line until the teacher arrives to open the doors.

PICK UP

Parents will park in the green star lot & meet their child at the front doors. All families will be assigned a pickup number and the teachers will dismiss students to their families based on their assigned numbers. Parents will scan the Brightwheel code to sign their child out for the day.

Notes:

All individuals that are listed as an authorized pickup will need the Brightwheel app on their phone to electronically sign their students in and out each day.



Duncan Lake Early Childhood Center

ECSE - Early Childhood Special Education

Arrival and Dismissal



Parent Drop off/Pick up Location

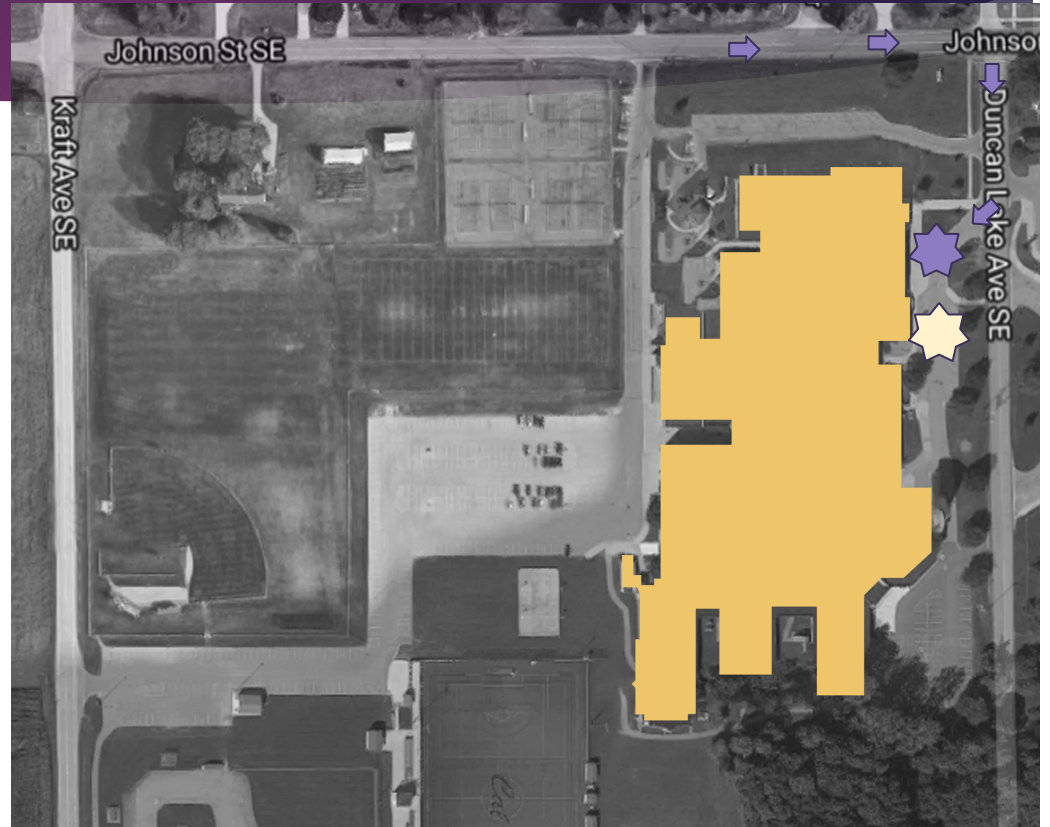


Bus Drop off/Pick up

Notes:

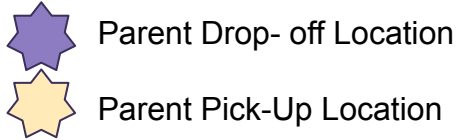
Please allow the BUS to be the first vehicle in the driveway. Parents may line up behind the bus.

Please remain in your car with your child. The classroom teachers will meet you at your car and the teachers will escort your child into and out of the building.



Duncan Lake Early Childhood Center

GSRP Arrival & Dismissal



Please review carefully as pick-up and drop-off procedures are different.

AM DROP OFF

Enter the DLECC parking lot via Duncan Lake Ave. The lot is on the northside of the building near the playground. Please park and wait in your car until the teacher opens the side door at 8:30am. Do not leave your child unattended at the door.

PM PICK UP

Parents may begin lining up 10 minutes prior to dismissal, at 2:50. Enter the Duncan Lake Middle School parking lot via the Kraft Ave entrance. Follow to the left and line up near the playground. All families will be assigned a number and must display the provided number card in their vehicles. Please remain in your car. Children will be helped to the car with their matching identification number. Parents should pull forward as soon as their child is in the car and buckle quickly to keep the line moving. Cars will exit via Johnson St.

